

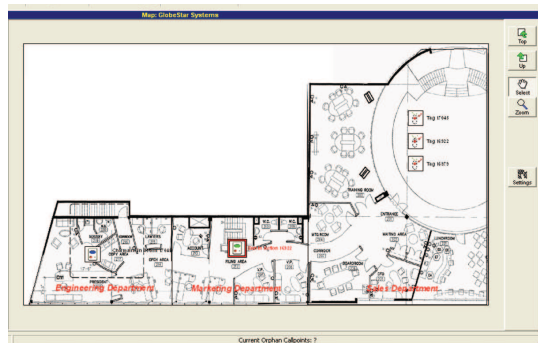
## CONNECTING YOU TO THE POWER OF INFORMATION IMMEDIACY™

### LOCATION BASED SERVICES A CONNEXALL® SOLUTION

#### How It Works

With the inclusion of Location Based Services, Connexall now helps you identify the location of people, staff, or assets in real time. Location information can be used to provide additional information as part of existing alarms and notifications or to generate new alarms based on your business rules.

Working with all the major Real-Time Location Services (RTLS) vendors, Connexall enhances their functionality and can create rules and processes based on information from more than one system. If you have multiple RTLS systems installed in your facility, Connexall can use information from all or any existing RTLS system to generate alarms. For example if two pieces of equipment tracked by two different RTLS systems get too close to each other, Connexall can generate notifications from both systems. This capability allows you to set up rules and processes across multiple systems with a single interface, all with common reporting and notification.



Map display in Connexall's Device Assignment Client

#### Other applications of Location Based Services include:

**Man-down alert:** If an RTLS tag does not move for a pre-specified amount of time, notify security or their nearest colleague.

**Enhanced Asset Tracking:** When equipment is put into storage or in a closet while waiting for regular maintenance, send an alert to the person responsible so you can get equipment back into service faster.

**Staff Safety:** Add location information to panic alarms, ensuring that security staff know where they need to go as soon as they receive an alarm.

**Enhanced Workflow:** Process enter/exit events and enable presence lights in rooms or in the unit when staff enter or leave, or auto-cancel all alarms in a room when nurse enters (depending on RTLS system capabilities).

**Staff Sign-in/out:** Automatically sign-in staff members when their tag enters a unit at the beginning of a shift (and update the staffing screen).

**Temperature Notifications:** Many RTLS systems now offer tags with temperature sensing capabilities, allowing you to monitor temperatures in drug cabinets, fridges, and blood banks. Instant notification when temperatures go outside a specified range means that you can immediately respond and save these valuable items.

# Connecting healthcare environments to the power of information immediacy.

**Enhanced Patient Services:** Give each patient a location tag, and as they enter and exit rooms, receptionists can be notified of their arrival so they can let the doctor know.

## Reporting

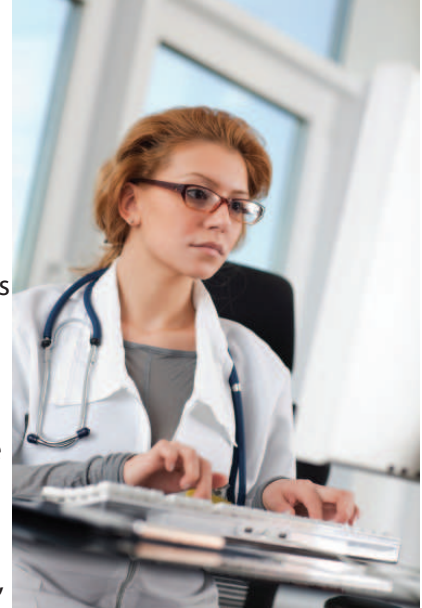
Included in the core of Connexall is robust management reporting capability, providing management teams with data relevant to their specific departments, and allowing for precise fine tuning of workflow processes. Managers can leverage this tool to improve overall operational efficiency and manage workload.

## Additional Integration

Easily integrate new devices and monitoring software, or adapt new tools and procedures in your facilities. Connexall integrates with virtually any business system including: wireless phone systems, HL7, paging controllers, patient monitors, telemetry, security systems, fire alarms, access control, PBX, network equipment, HVAC and many more. At one central location, staff can manage and monitor events from different business systems.

## Simple to Use, Easy to Learn

Connexall's user interface is intuitive - so staff training is easy. With one touch of a button, supplies can be requested, staff can be contacted, calls can be forwarded, and reports can be generated. Acknowledging requests, signing in or out, and escalating calls takes mere seconds – ensuring efficiency. With improved communication, patient flow, staff accountability, and data measurement, clinicians can spend more time on what matters most - quality patient care.



- ✓ Add location information to existing alarms, enhancing responses
- ✓ Optimize staff response with up-to-the-minute information
- ✓ One-touch callback: instantly return messages or calls with one button
- ✓ Leverage existing technology infrastructure: Connexall is completely vendor-neutral – allowing you to enhance existing equipment, or choose new, best-of-breed systems
- ✓ Integrate wireless devices to deliver updates from multiple facilities